

How a Clark vault protects the casket.

A Clark Grave vault is designed, engineered and built from a non-porous metal to protect the casket and its precious contents against elements such as water.

All Clark vaults are welded inside and out and are immersion tested to assure weld integrity.

The rounded-dome shape allows condensation to roll across the top and down the sides of the vault, rather than onto the casket.



Handles are attached to studs on the outside of the vault to avoid drilling or hole punching. This keeps out moisture and maintains structural integrity.

The highest base in the industry elevates the casket to provide ultimate protection.

Fasteners secure the dome to the base.

**INFORMATION AND
SELECTION GUIDE**

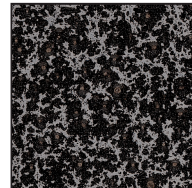
© 2005 Clark Grave Vault Company. All Rights Reserved. Wc

CLARK
GRAVE VAULT®
Only memories last longer

Blacksilver 0.125" Aluminum.

Clark combines the classic brilliance of a blacksilver powder-coated finish with the affordable, long-lasting durability of Series 5052 aluminum.

The vault's dome-shaped design works with the natural properties of aluminum to protect the casket from moisture.



Black Silver
Close-up

ENHANCED SERIES

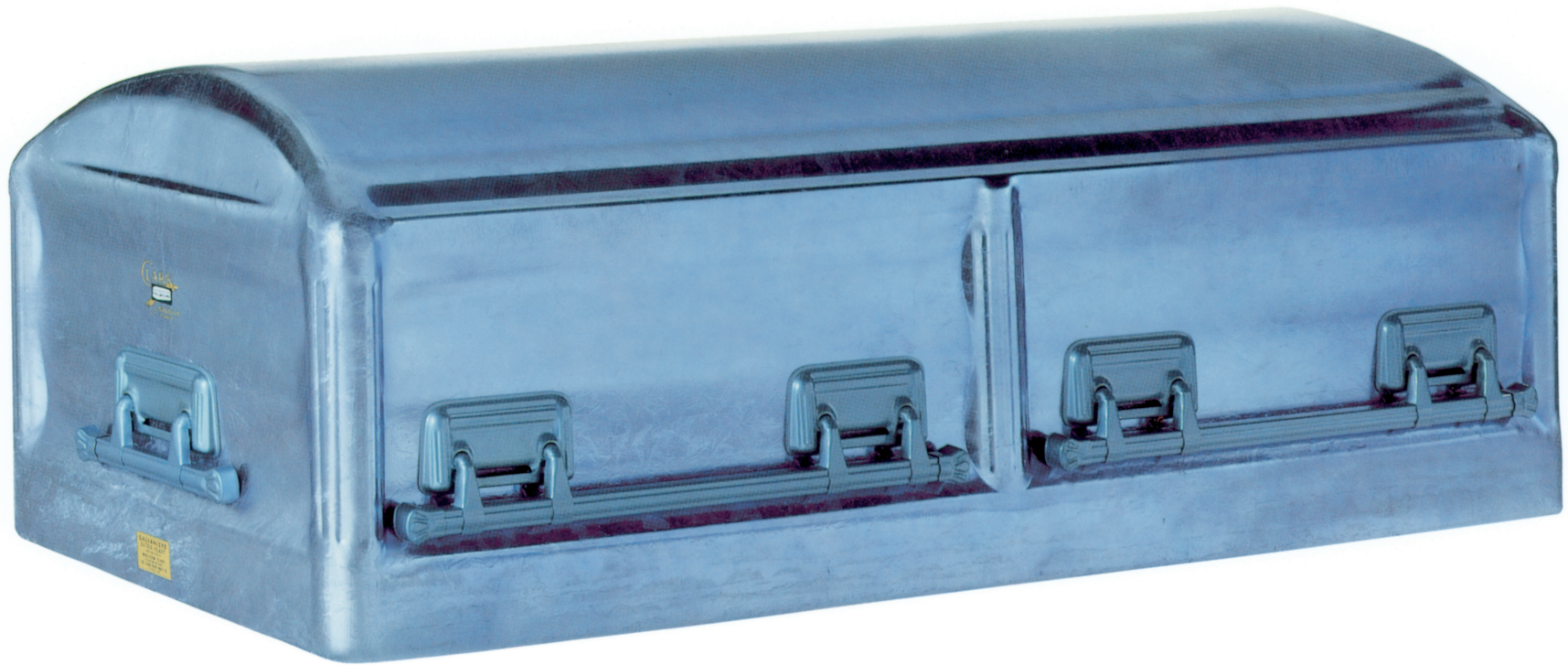
MPI 10

CLARK
GRAVE VAULT®
Only memories last longer

Blue Galvanized Steel 10 Gauge.

A translucent blue finish allows the galvanizing to show through for a weathered look.

The galvanizing process adds a zinc coating that more than doubles the life of the steel.



**ENHANCED METAL
SERIES**

MPI-6

CLARK
GRAVE VAULT®
Only memories last longer

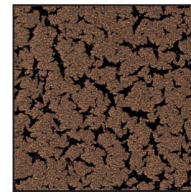
Burnished Bronze Steel 12 Gauge.

A magnificent finish in the image of one of the world's most elegant metals.



**STANDARD METAL
SERIES**

MPI 2



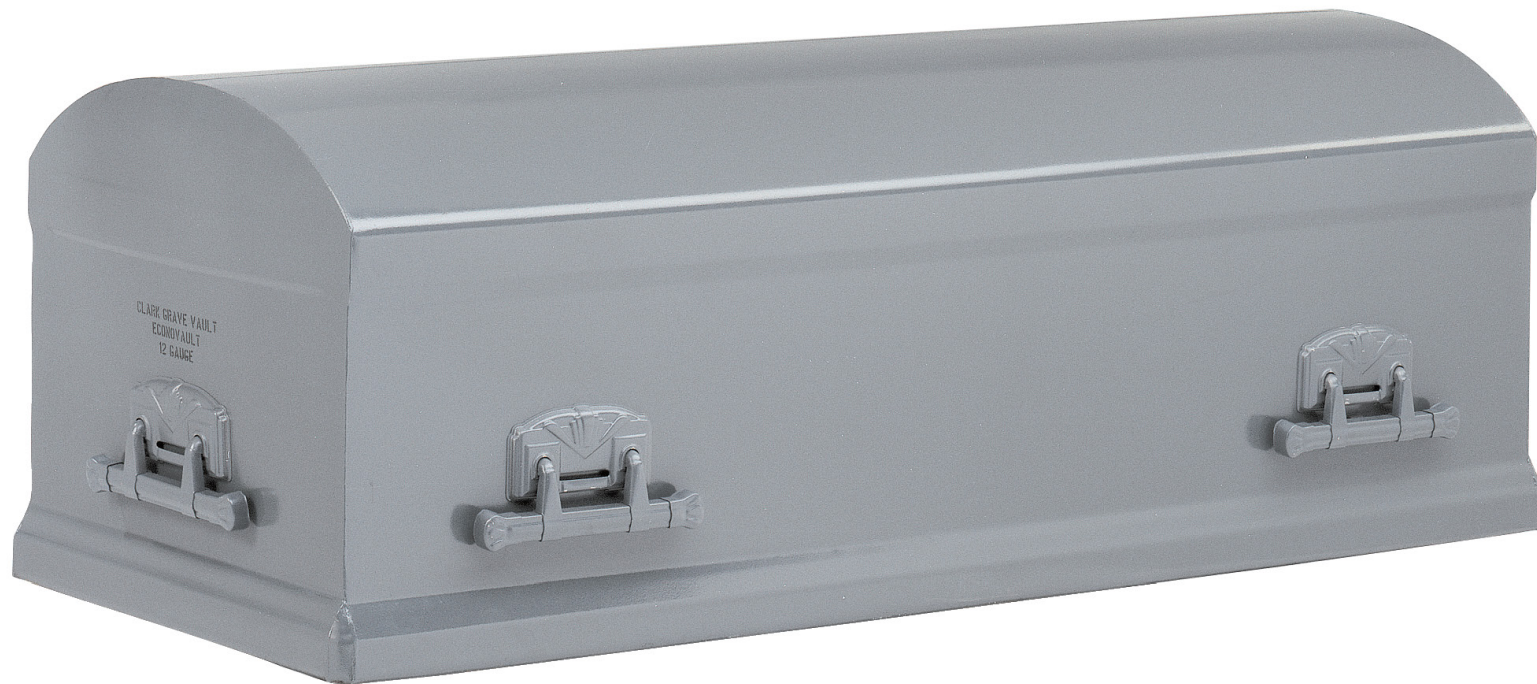
Burnished
Bronze
Close-up

CLARK
GRAVE VAULT®
Only memories last longer

Econovault.

Solid metal
protection for
those with more
limited budget
considerations.

12 gauge steel.
Available in gray.



**ECONO-LINE
PRODUCTS**

© 2007 Clark Grave Vault Company, All Rights Reserved. KM

A product of
The Clark Grave Vault
Company.

Larger Vaults.

Clark quality and protection in three larger sizes.

Shown in Silver Slate.

Also available in these material/size/color combinations:

- 12 Gauge Copper 33"W X 92"L X 27"H Pennyvein
- 12 Gauge Stainless Steel 33"W X 92"L X 27"H Silver
- 12 Gauge Steel 33"W X 92"L X 27"H Silver Slate
- 12 Gauge Steel 36"W X 92"L X 28"H Silver Slate
- 12 Gauge Steel 42"W X 92"L X 28"H Silver Slate



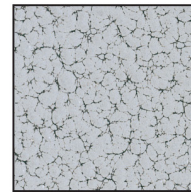
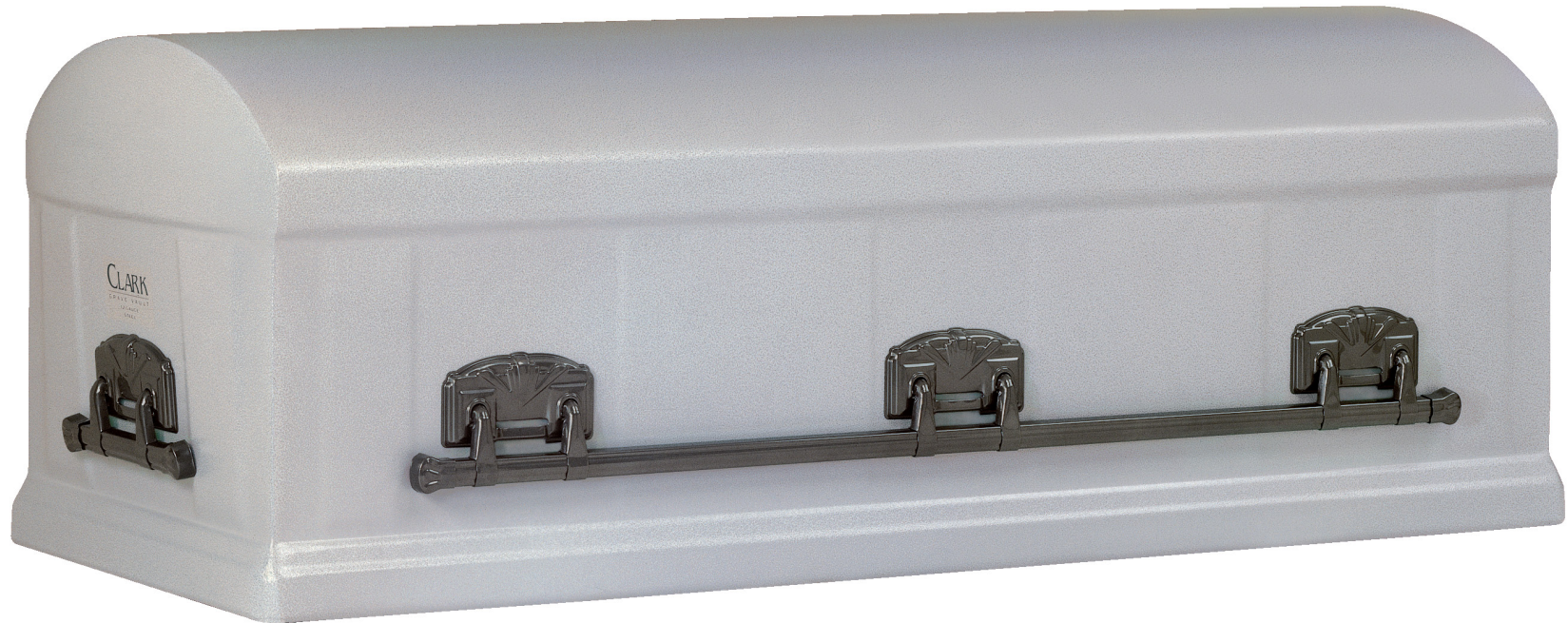
**INFORMATION AND
SELECTION GUIDE**

© 2001 Clark Grave Vault Company. All Rights Reserved. Wc

CLARK
GRAVE VAULT®
Only memories last longer

Silver Slate Steel 12 Gauge.

The enduring appearance of slate provides the perfect complement to many casket colors.



Silver Slate
Close-up

**STANDARD METAL
SERIES**

MPI 2

CLARK
GRAVE VAULT®
Only memories last longer

Silver Stainless Steel 12 Gauge.

Durable stainless steel with the natural look of silver.

An alloy of iron, chromium and nickel provides the finest in stainless steel protection.



STAINLESS SERIES

MPI+

CLARK
GRAVE VAULT®
Only memories last longer

Silver Galvanized Steel 12 Gauge.

A classic silver finish with the added protection of galvanizing.

The zinc galvanizing is an exclusive Clark process that doubles the life of the steel.



**ENHANCED METAL
SERIES**

MPI 4

© 2000 Clark Grave Vault Company. All Rights Reserved. Wc

CLARK
GRAVE VAULT®
Only memories last longer

Solid Copper 12 Gauge.

Accented with the beauty of brushed copper.

Copper's natural beauty is accented by brushed side panels, ends, and an attractive band around the top.



COPPER SERIES

MPI ++

CLARK
GRAVE VAULT®
Only memories last longer

Statuary Galvanized Steel 7 Gauge.

The statuary finish provides an enriched look to this beautiful vault, while galvanizing enhances its durability.

The zinc galvanizing is an exclusive Clark process that doubles the life of the steel.



**ENHANCED METAL
SERIES**

MPI 12

© 2000 Clark Grave Vault Company. All Rights Reserved. We

CLARK
GRAVE VAULT®
Only memories last longer

Statuary Galvanized Steel 12 Gauge.

A look of refinement combined with uncompromising protection.

Clark's exclusive galvanizing process doubles the life of the steel.



**ENHANCED METAL
SERIES**

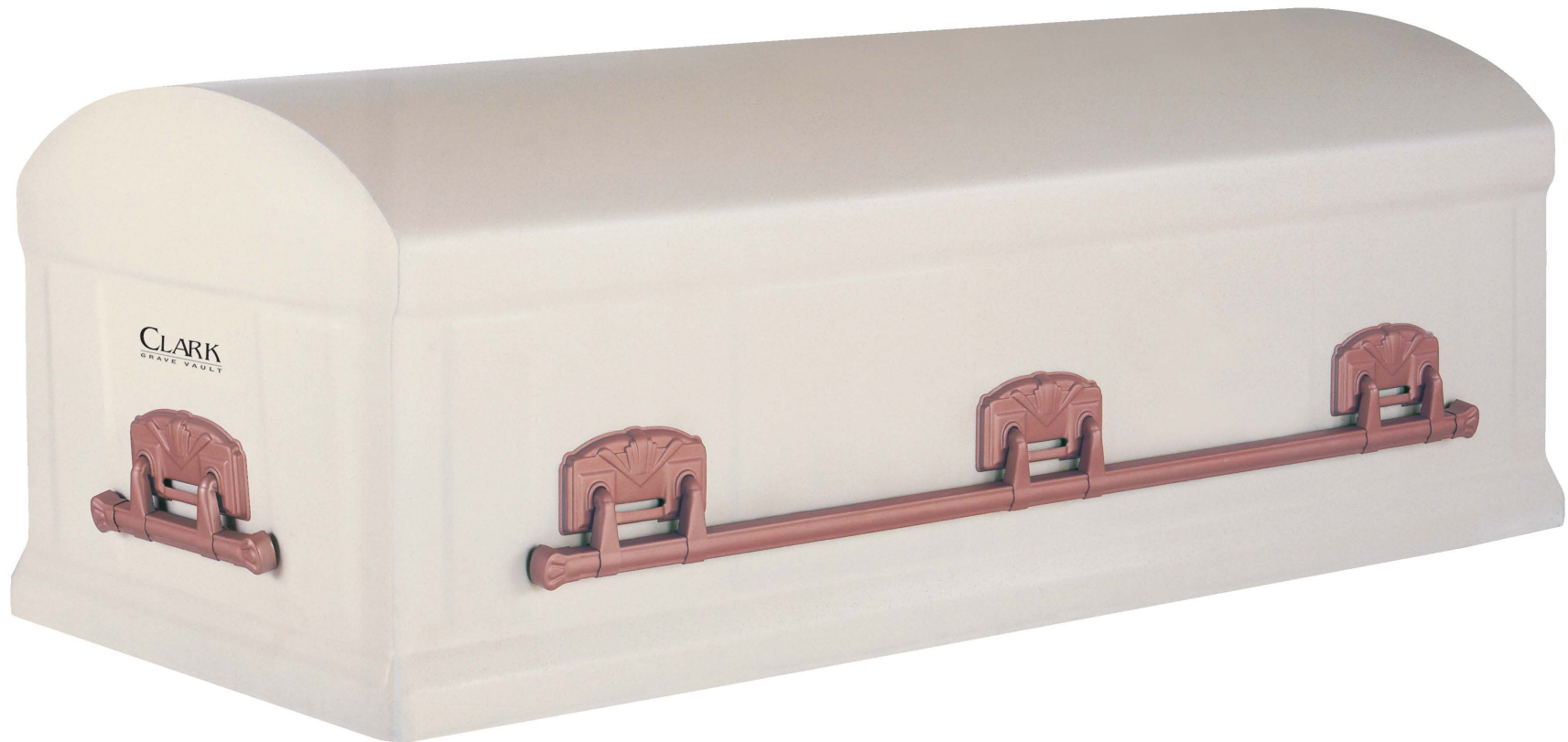
MPI 4

© 2000 Clark Grave Vault Company. All Rights Reserved. We

CLARK
GRAVE VAULT®
Only memories last longer

Whiterose Steel 12 Gauge.

A delicate whiterose finish belies this vault's uncompromising protection.



**STANDARD METAL
SERIES**

MPI 2

© 2000 Clark Grave Vault Company. All Rights Reserved. We

CLARK
GRAVE VAULT®
Only memories last longer